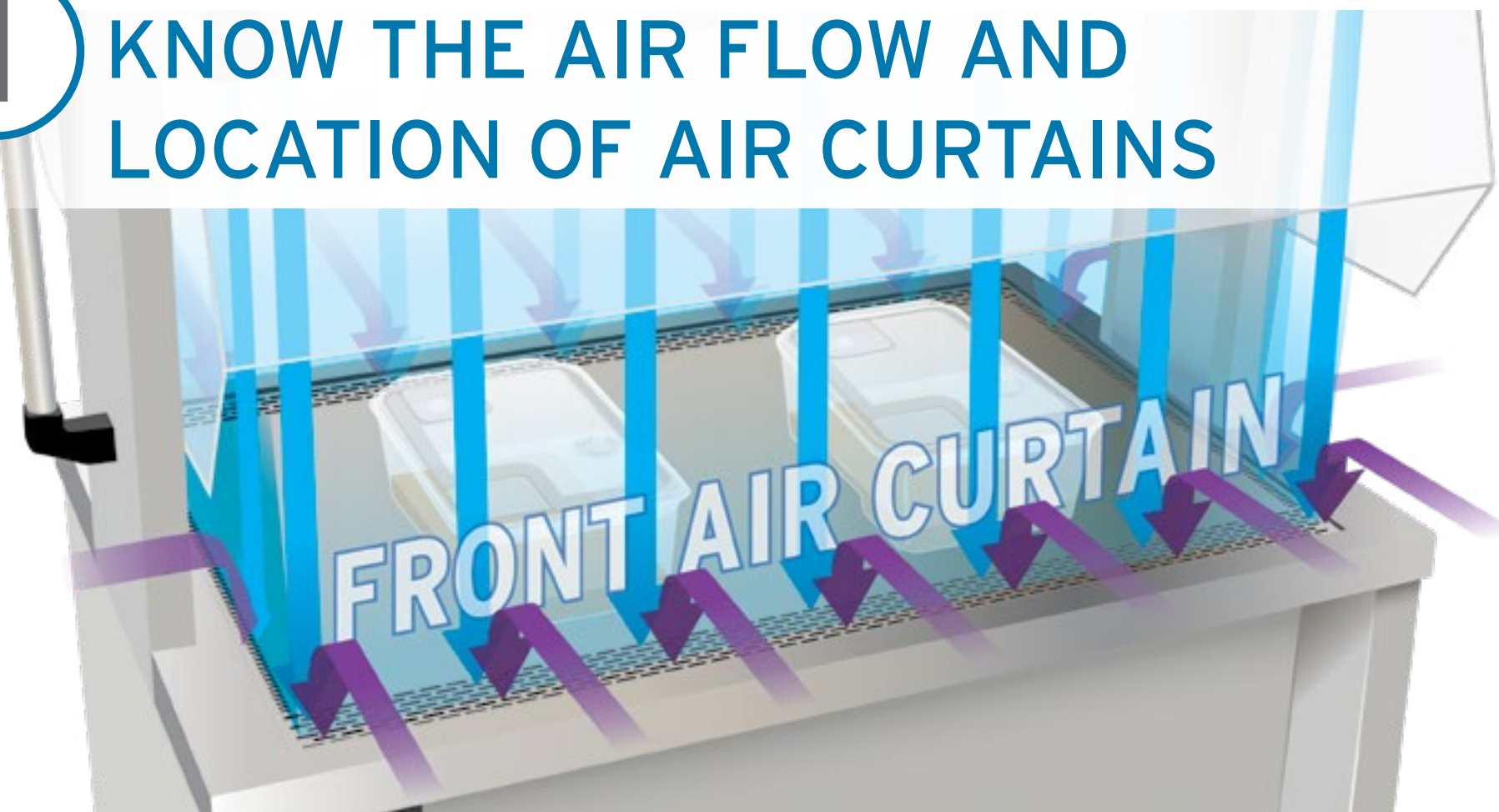


10 TIPS

FOR WORKING SAFELY IN YOUR ANIMAL TRANSFER STATION (ATS)

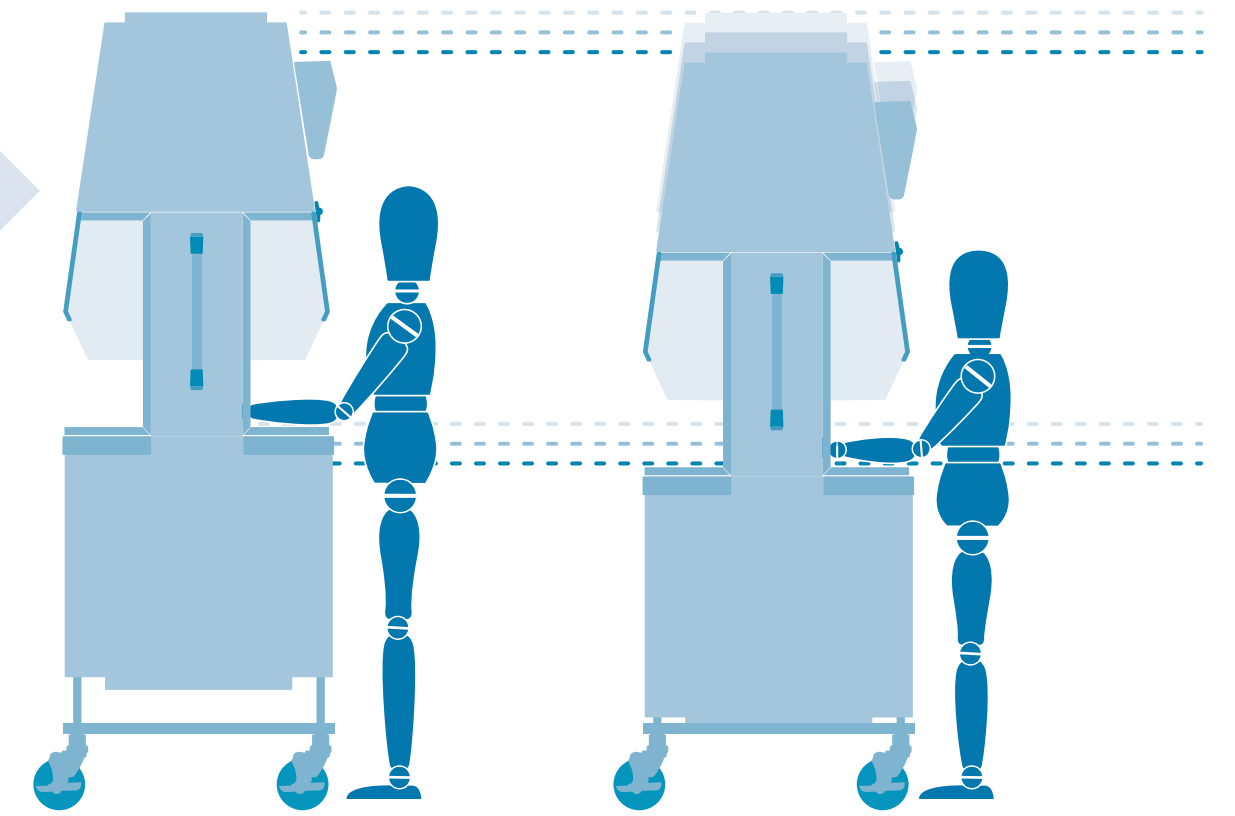
Good technique when working within an Animal Transfer Station helps protect the animal and limit the spread of allergens.

1 KNOW THE AIR FLOW AND LOCATION OF AIR CURTAINS



2 ADJUST ATS HEIGHT FOR THE USER

Adjusting the height of the ATS to best fit the user may reduce fatigue, prevent injuries, and optimize workflow.

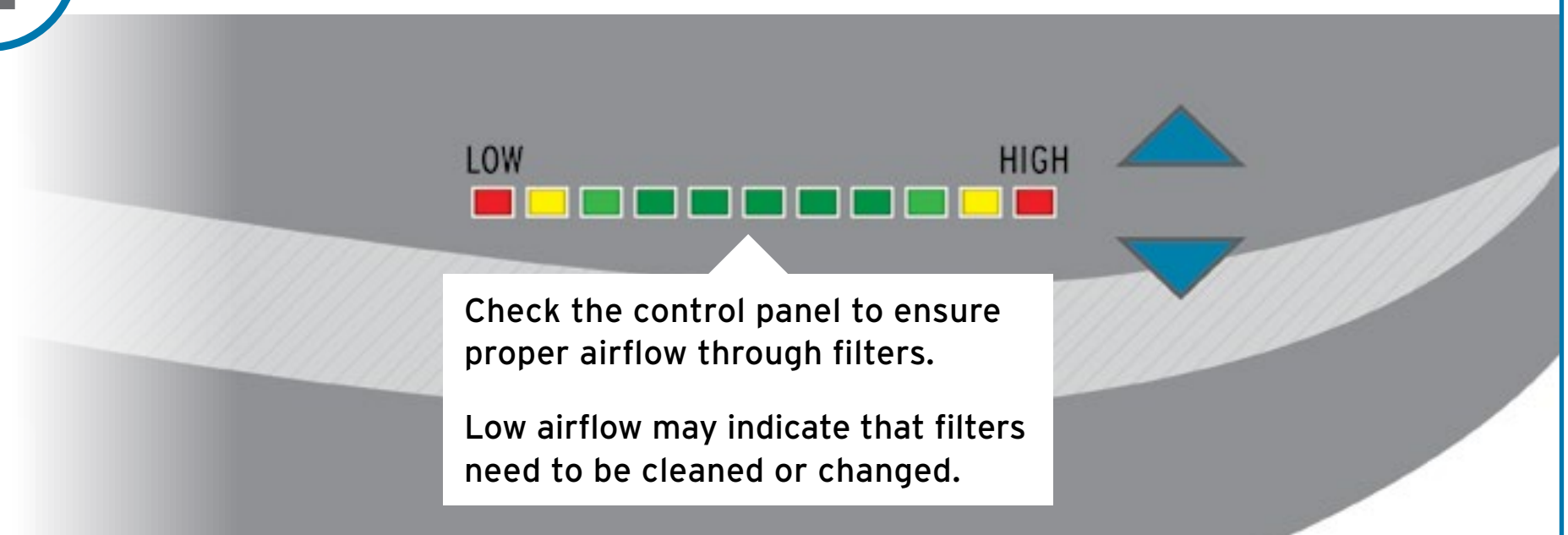


3 DISINFECT THE WORKSURFACE

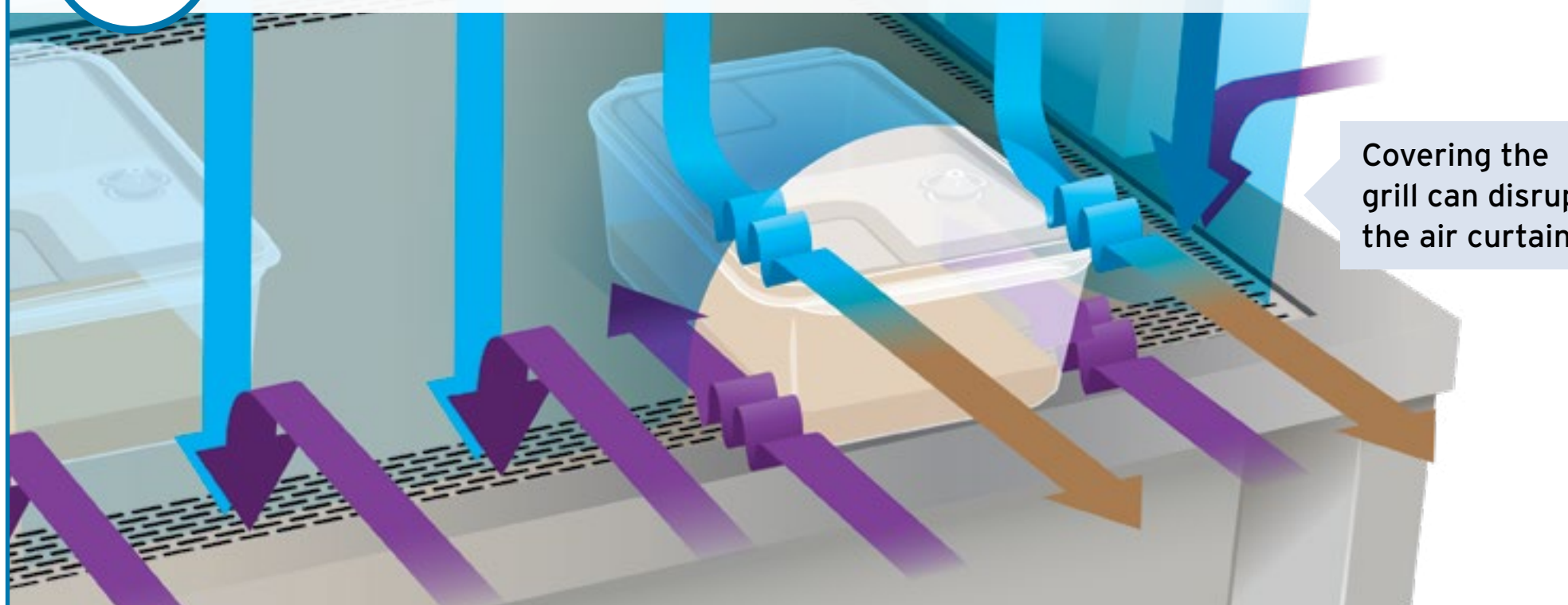


Follow disinfecting SOP before turning on the blower.
Use a disinfectant compatible with surface materials & follow manufacturer's directions.

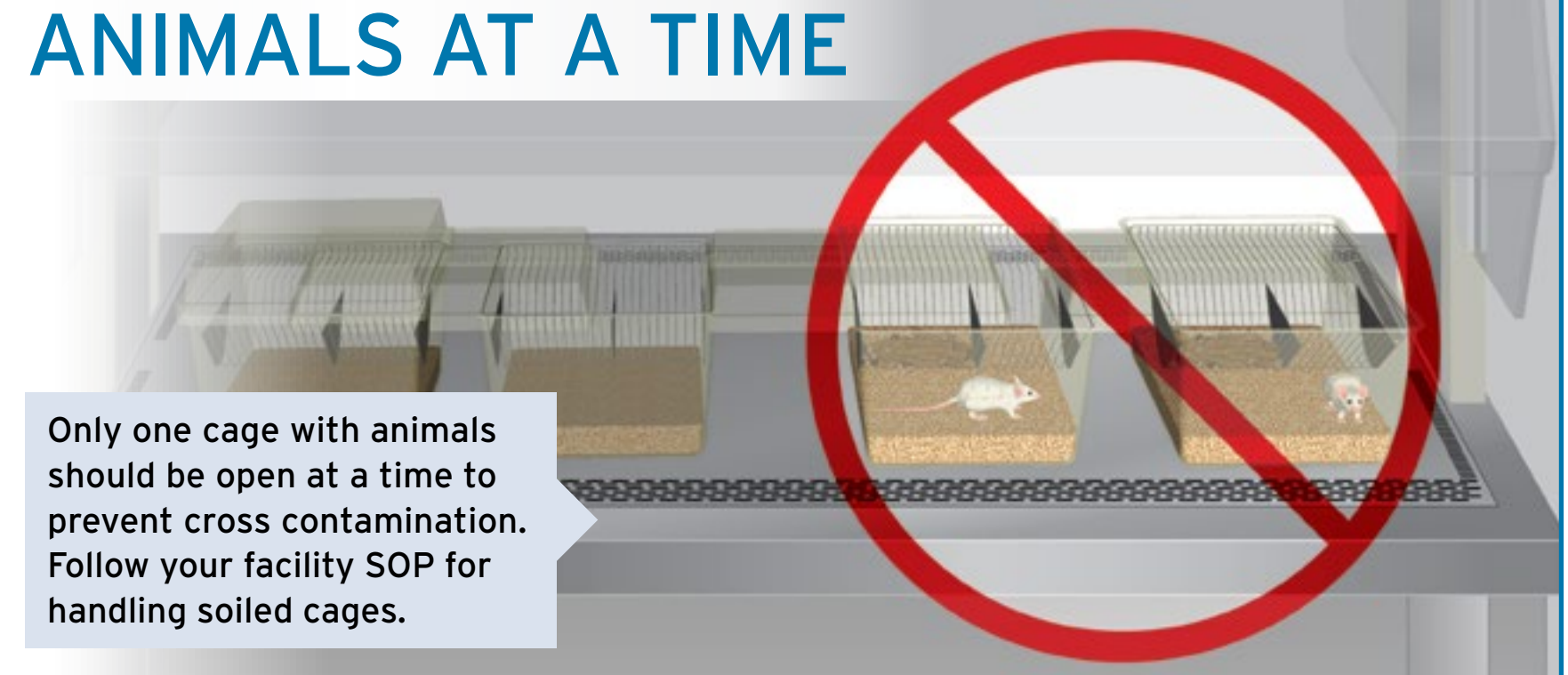
4 VERIFY THE AIRFLOW



5 NEVER BLOCK THE GRILL

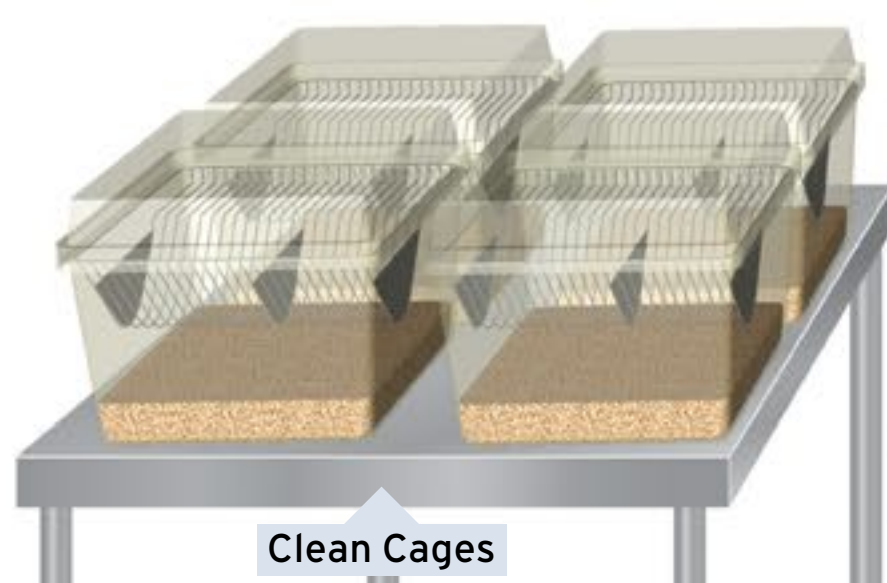


6 ONLY OPEN ONE CAGE WITH ANIMALS AT A TIME



7 POSITION SUPPLIES IN OR NEAR THE ATS ON THE CLEAN SIDE

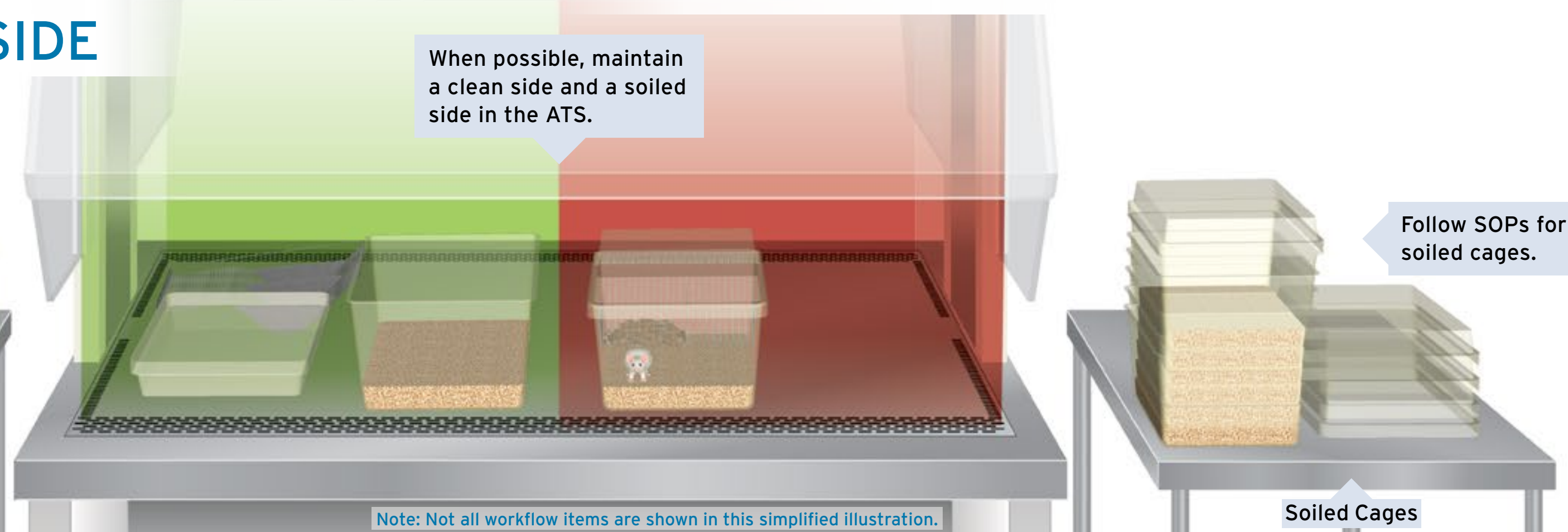
Clean cages may be positioned on a cart adjacent to the BSC.



8 PREPARE THE CLEAN CAGE FIRST AND WORK FROM CLEAN TO SOILED

When possible, maintain a clean side and a soiled side in the ATS.

Follow SOPs for soiled cages.



9 CLEAN AND DISINFECT ON AND UNDER THE WORK SURFACE

Check the prefilter and clean or replace as needed.



10 DISCONNECT POWER AND RETURN THE ATS TO STORAGE LOCATION

